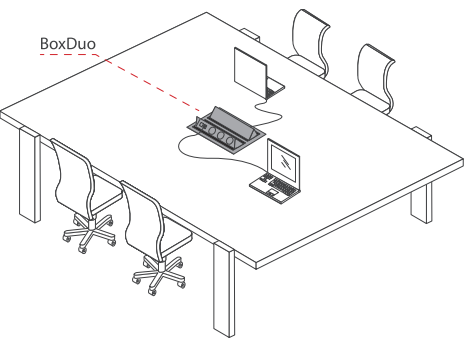


магнет-БоксДуо



magnet-BoxDuo

Double hinged box built-in the table top / desk. It's a perfect solution for conference rooms where more power sockets and multimedia ports are needed. Movable covers with brush strips enable ergonomic use of the boxes in opened and closed position.

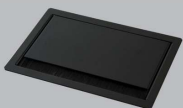
magnet-BoxDuo is in 8-module version (two 4-module strips).

■ Standard version:
8-module, two-sided (2 x 4 modules).

■ System used in **magnet** product line allows to adopt the configuration to individual client's needs because of available power sockets and multimedia modules. More information on page 28.



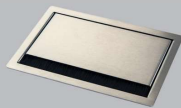
WHITE
(RAL9003)



BLACK
(RAL9005)



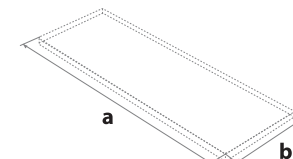
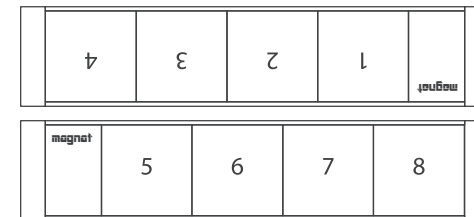
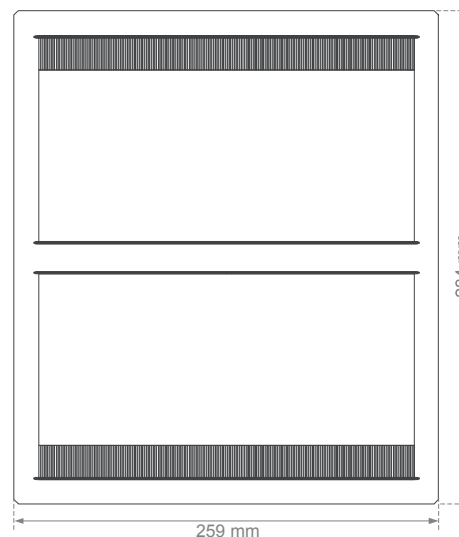
GREY
(RAL9006)



STAINLESS STEEL
(INOX)



CHROMED-PLATED STEEL
(CHROME)

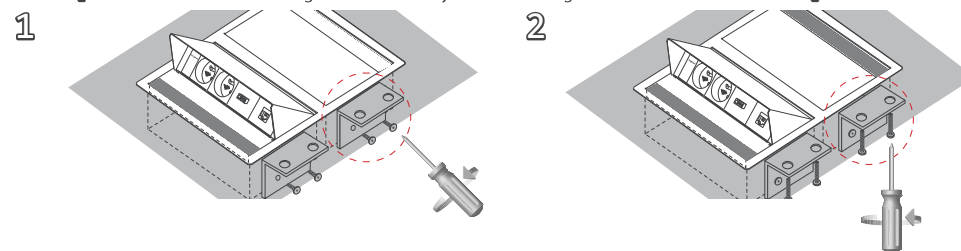


Mounting hole dimensions:

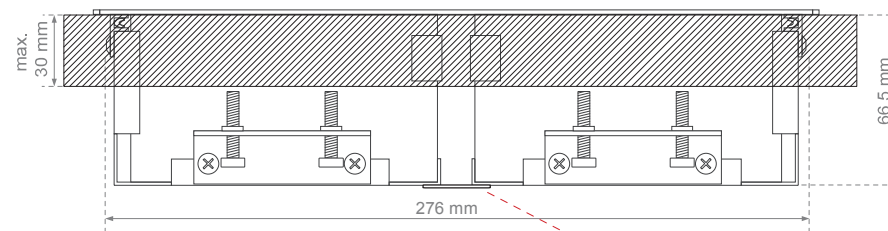
version	a x b
8-module	243 mm x 276 mm +1mm/-0mm

* In case of configurations with two circuits or with UK power sockets number of available modules is lower.

Insert **magnet-BoxDuo** into the mounting hole and assembly it with mounting brackets. Use M5 screws to fix **magnet-BoxDuo** to the desk.

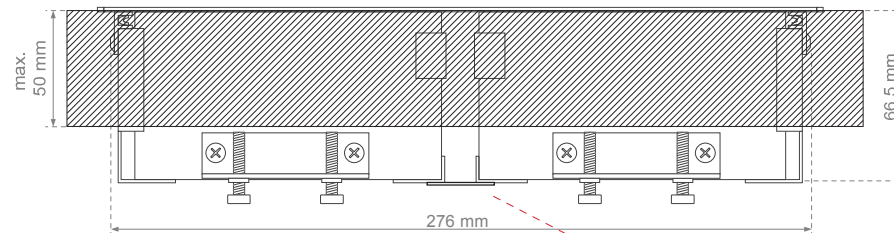


Assembling to the table top / desk of up to 30 mm thickness.



Please remove this part before assembling.

Assembling to the table top / desk of up to 50 mm thickness.



Please remove this part before assembling.