

magnet-Tube



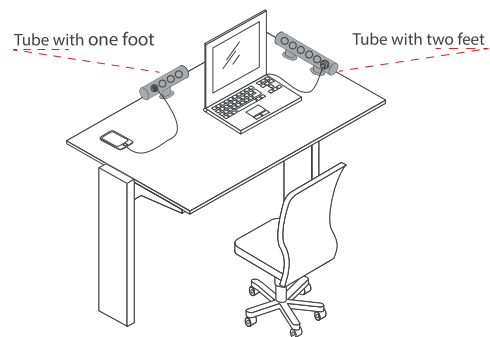
magnet-Tube

Power and multimedia unit with unique design dedicated to mounting on the table top / desk using feet. It ensures easy access to power and multimedia sockets and is a perfect solution for dispatcher, service and laboratory workstations. For its assembling are used standard Ø60 holes.

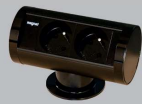
magnet-Tube gives the opportunity to meet the individual client's needs as it's available in versions from 2 to 6 modules and a few colour variants: anodized on black (RAL9005), natural or painted in white, red, yellow, green or blue colour.

■ Standard versions: 2-module, 3-module, 4-module (with one foot) and 5-module, 6-module (with two feet).

■ System used in **magnet** product line allows to adopt the configuration to individual client's needs because of available power sockets and multimedia modules. More information on page 28.



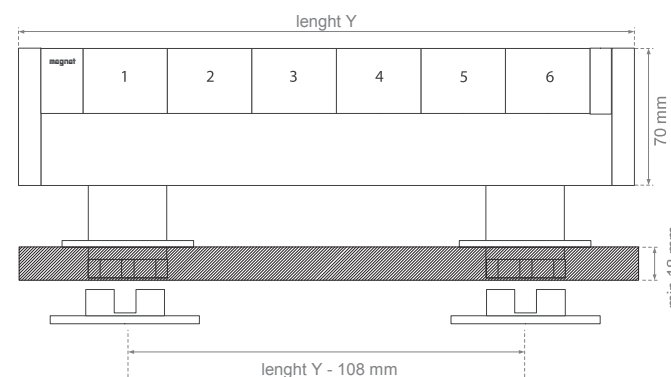
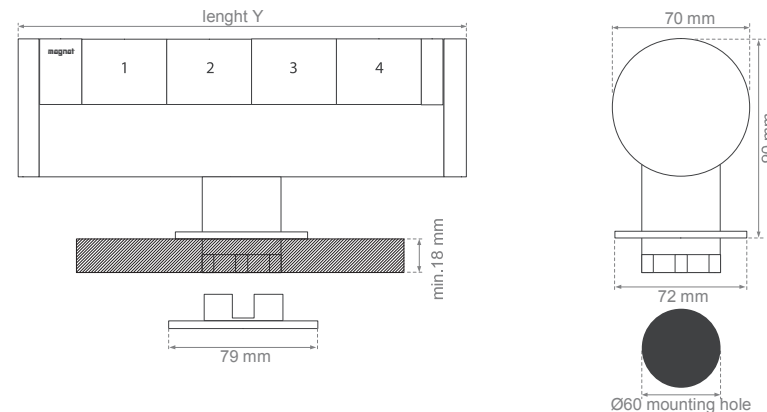
WHITE (RAL9003)



BLACK (RAL9005)



NATURAL ANODIZED ALUMINIUM



Dimensions of different versions (length of housing):

version	length Y
2-module	141 mm
3-module	184 mm
4-module	227 mm
5-module	270 mm
6-module	313 mm
7-module and more	55 + (43 * number of modules)

* Specified dimensions don't concern configurations with UK power sockets nor the ones without multimedia ports / USB chargers. This kind of dimensions are available on request.

Insert the housing into standard Ø60 hole, use screws dedicated to plastics and lock the bolts.

